

Lakeland Power Co-op Member News

April 2024

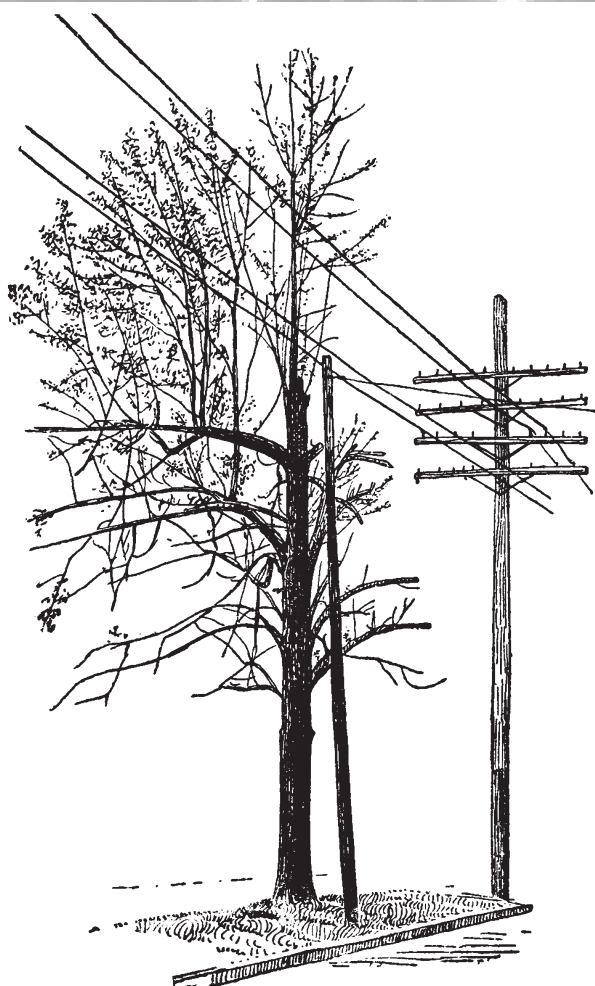


Office Address: 4932 50 Avenue, Vegreville, AB

Phone 780.632.6112

Fax 780.632.6116

Toll Free 1.866.635.6112



Line Patrol

It's the time of year where you will see our Lakeland Power Co-op trucks travelling our service area for Line Patrol.

Our linemen will be looking at poles, power lines, transformers, meters, and any trees affecting the power lines.

Line Patrol is completed every Spring to document all maintenance required to be completed throughout the year and to provide our members with the best service possible.

Click Before You Dig

As we approach Spring, Lakeland Power Co-op would like to remind members to Click Before You Dig! Please ensure that safety is your top priority, and that any work on your property is completed with care.

Visit utilitysafety.ca for further information.

How to Reset Your Breaker

We ask all of our members to check the main breaker at the transformer pole before calling in about a power outage. It saves both you, and our Linemen time, as well as being as simple as flipping on a light switch!

Why do we ask you to do this first? You may have overloaded your breaker, which caused it to trip. Turn off what you were running, then try to reset your breaker. If the breaker was in fact overloaded, you will have your power restored immediately, then you will not have to wait for a Lineman to travel to your site and troubleshoot the issue. If you reset the breaker and still have no power, please give the office a call and we will dispatch a Lineman!

How do you reset your breaker? We have 2 styles of breakers throughout our territory, please see attached images. Locate the breaker outside on your transformer pole, and find the switch. Even if the switch is still in the on position, pull it down (to the off position) and push it back up (to the on position).

If you have any questions, please give our office a call.



The Lakeland Power Co-op office will be closed on Monday, April 1, 2024 for Easter Monday.

Lakeland Power Co-op

MEMBER BENEFIT PARTNERS

4932 50 Ave. Vegreville, AB (780) 632-6112

Do you have a business in mind that would like to see participate in our program?

Please let us know!

If you require a new Member Benefit Card, please contact the office.

Bengel Contracting Ltd.

49066 RR 254 Leduc, AB (780) 220-1612

10% Discount on Solar Installation

Bumper to Bumper

(Veg & Two Hills Auto and Industrial Supply)

6620 Hwy 16A West Vegreville, AB (780) 632-3770

4909 55 Ave Two Hills, AB (780) 657-3304

5% discount based on cash transactions
including Debit, Mastercard or Visa

Full Throttle Truck & Trailer Repair

6620 Hwy 16A West Vegreville, AB (780) 632-3770

5% discount based on cash transactions
including Debit, Mastercard or Visa

Jiffylube & Carwash Vegreville

4733 50 Ave Vegreville, AB (780) 632-6144

\$5.00 off any services excluding carwash, 10% off any
services of \$200 or more

(Discounts cannot be combined or used with any other
offer)

LaRue Tree Certified Arborists Inc.

Serving Vegreville & Edmonton Areas (780) 603-5317

15% discount on jobs under \$1,000, 10%
discount on jobs over \$1,000

Liquor Den

5230 50 Ave Vegreville, AB (780) 632-6185

10% discount on all regular priced items with some
exclusions, inquire in store for exclusions

Old Fashion Bread Bakery Co. Ltd.

114 White Earth Street Smoky Lake, AB (780) 656-3780

10% Discount Storewide

Quest Disposal & Recycling Inc.

6906 66 Ave Vegreville, AB (844) 840-2467

5% discount on any new roll off bin service

Rona Vegreville

(Vantage Building Supplies Ltd.)

4723 45 Ave Vegreville, AB (780) 632-2119

5% discount on all regular priced items

Shane's IDA Pharmacy

37 Wheatland Ave Smoky Lake, AB (780) 656-3945

10% discount on front store items

Smoky Lake Mechanical Ltd.

5111 43 Ave Smoky Lake, AB (780) 656-8622

10% discount on labour on new installation
of an electric water heater

Urban Bloom

4928A 50 Ave Vegreville, AB (780) 632-3356

15% discount on any item

NEW Vegreville Ford

6106 50 Ave Vegreville, AB T9C 1N6

Friends/Family pricing on all applicable new/used vehicles
(specialty vehicles do not apply)

- Degree of discount varies by model.

Parts - 5% discount (on parts purchased at front counter)

Service - 10% off total billing including parts & labour

15% off detailing packages

NEW Xtreme Equipment

4909 Bruce Rd Vegreville, AB (780) 632-7780

5202 40th Street St. Paul, AB (780) 645-4639

5% off of Yoder Smokers

Ziegler Fashion / The Quilt Rack

5008 50 St. Vegreville, AB (780) 632-7890

15% discount with certain exclusions,
inquire in store for exclusions

Offers subject to change without notice.